

DFW National Cemetery
Arrival Brief For
VIP Guests and Participants

Please plan to arrive at the cemetery “Permit Entrance” no later than 0900 (09:00am).

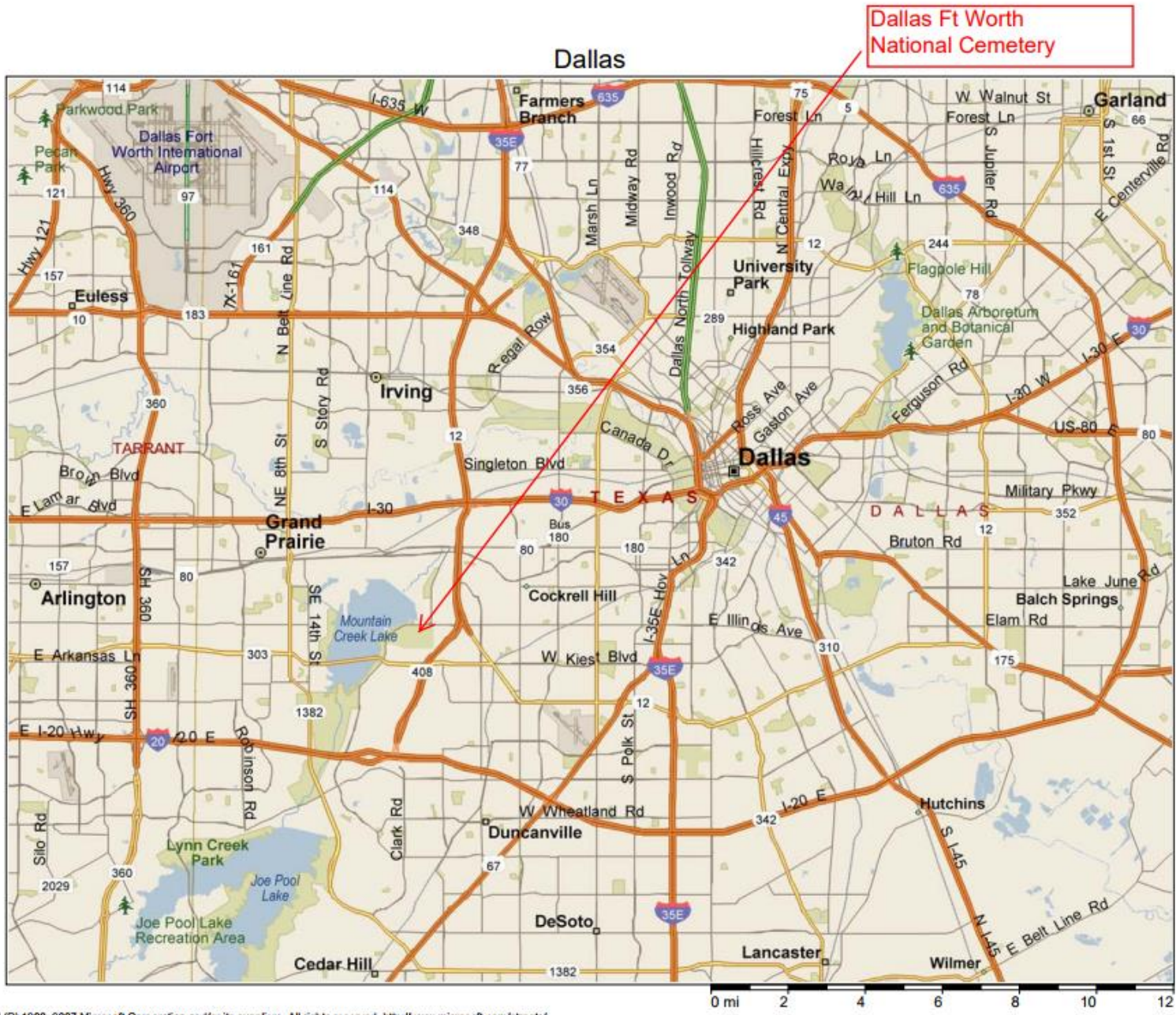
The maps will get you to the back gate of the cemetery. To access this gate, use Spur 408 to Mt. Creek Parkway. Any other approach will conflict with general public traffic. This entrance will be marked “*Permit Entrance Only*”. This is has been called service entrance, back gate, and several other terms. ***DO NOT*** use the front/main entrance. This would result in you being late.

When you get to the gate, a team will greet you. They will direct you to the correct parking area. Your parking area will be close to the cemetery administration building. Restrooms are available in the building. Light refreshments will be served in the employee break room. We need to have finished moving everyone from the permit parking area/administration building no later than 10:15am. Vans and golf cars will be moving approximately 75 people, so please help us get everyone to the assembly area early.

Please call me if you need additional information.

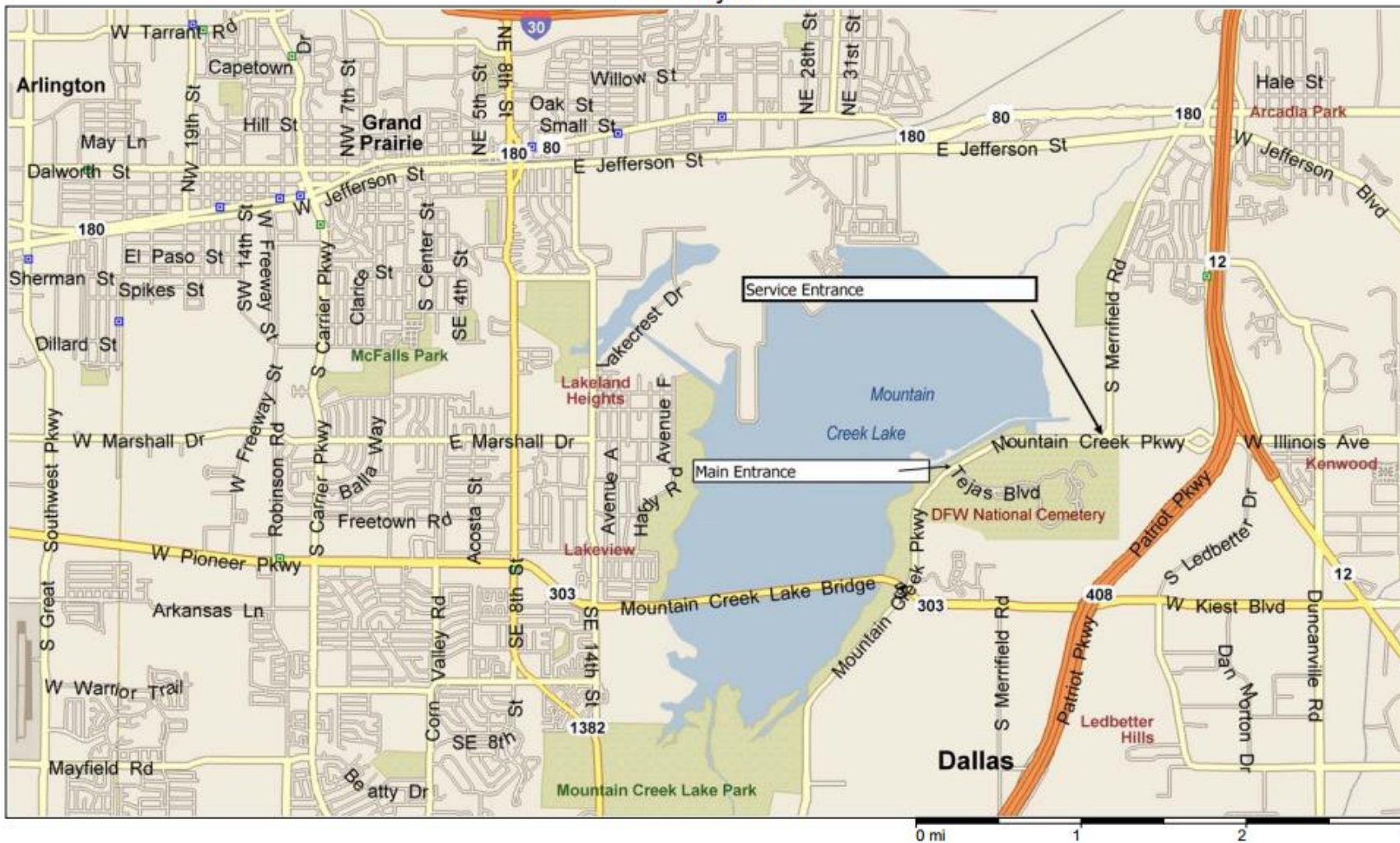
Thanks

Gary Poplin, CTRCS, USN (Ret)
Director Operations
Texas National Cemetery Foundation
Cell 214 693 8227

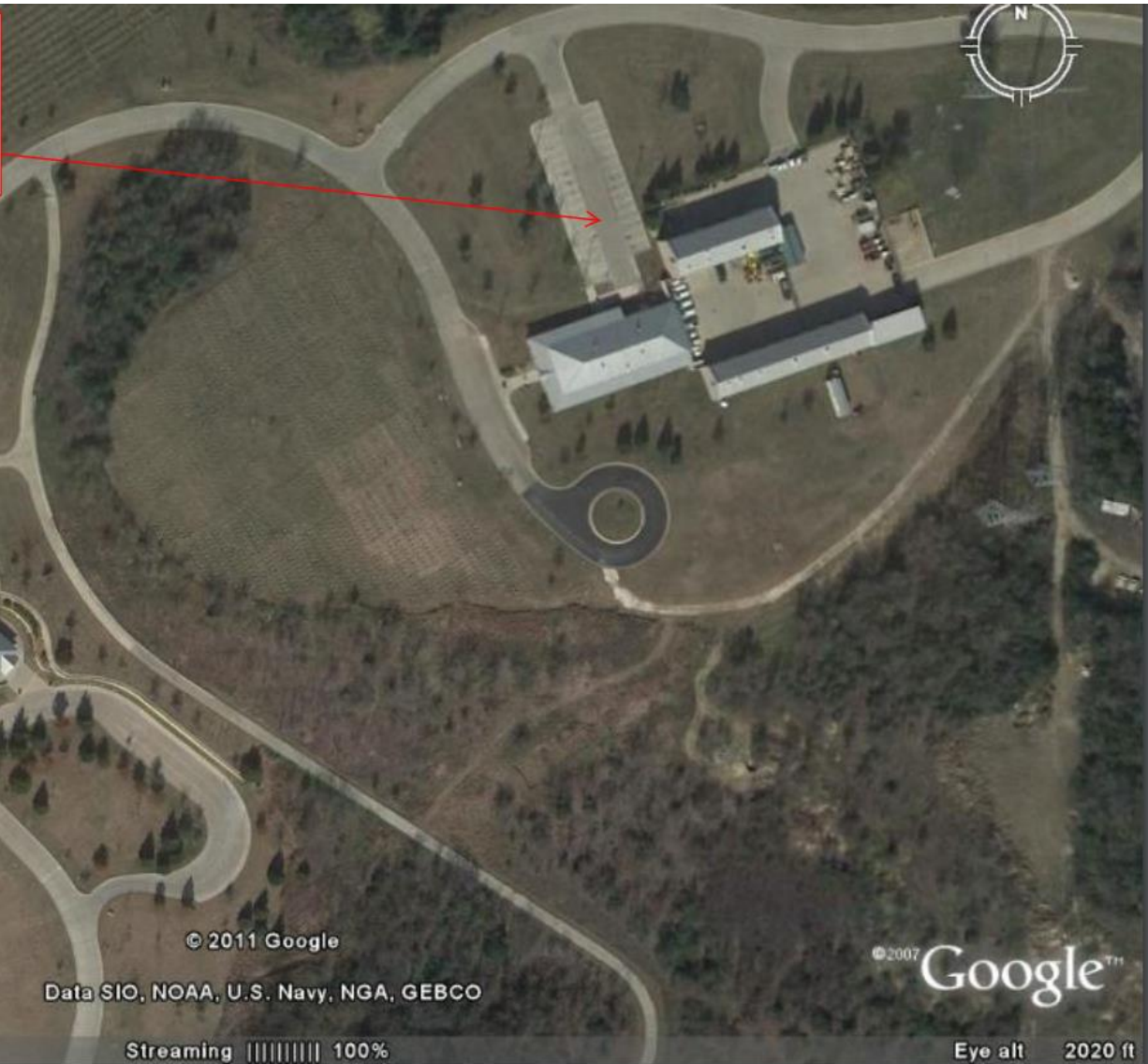


Copyright © and (P) 1988–2007 Microsoft Corporation and/or its suppliers. All rights reserved. <http://www.microsoft.com/streets/>
 Certain mapping and direction data © 2007 NAVTEQ. All rights reserved. The Data for areas of Canada includes information taken with permission from Canadian authorities, including: © Her Majesty the Queen in Right of Canada, © Queen's Printer for Ontario. NAVTEQ and NAVTEQ ON BOARD are trademarks of NAVTEQ. © 2007 Tele Atlas North America, Inc. All rights reserved. Tele Atlas and Tele Atlas North America are trademarks of Tele Atlas, Inc.

Cemetery Close



Park Here



© 2011 Google

Data SIO, NOAA, U.S. Navy, NGA, GEBCO

©2007 Google™

Pointer 32°43'02.50" N 96°56'00.82" W elev 542 ft

Streaming ||||| 100%

Eye alt 2020 ft